

SUFFOLK COUNTY VECTOR CONTROL AND WETLANDS MANAGEMENT

MARSH MANAGEMENT PLAN



Steve Levy, County Executive

CASHIN ASSOCIATES, P.C.
1200 Veterans Memorial Highway, Hauppauge, NY

December 2005

Based on:

Research:

- Dale and Hulsman
- Wolfe
- Bertness
- Nixon
- Teal

Experience:

- New Jersey
- Connecticut
- Delaware
- LI Demonstration Projects

21 Study Areas

Site Visits:

- Ocean County, New Jersey
- Connecticut

Consultations:

- Paul Capotosto, CDEP
- Susan Adamowicz, USFWS
- Steve Goodbred, MSRC-Vanderbilt

Regulations

Wetlands Workgroup (Susan Antenen, TNC, Chair)

Balla, Rick	EPA
Berg, David	Cameron Engineering
Capp, Charlie	Group for the South Fork
Davies, DeWitt	Suffolk County Dept. of Planning
DeBlasi, Phil	SCDHS
Dempsey, Mary	SCDPW
DeQuillfeldt, Charles	NYS DEC
Frank, Brian	Town of East Hampton
Gibbons, Nick	SC Parks
Goodbred, Steve	MSRC SUNY
Graves, Anthony	Town of Brookhaven
Guarino, Joseph	Town of Babylon
Iwanejko, Tom	SCDPW
Kassner, Jeff	Cashin Associates
Kessler, Craig	Ducks Unlimited
Kritzer, Jake	Env. Def.

McAllister, Kevin	Peconic Baykeeper
Nardone, Enrico	Seatuck
Ninivaggi, Dominick	Vector Control
Pavacic, John	NYSDEC
Penny, Larry	East Hampton Natural Resources
Pickerell, Chris	CCE
Putnam, Mike	NYSDEC-Wildlife
Rafferty, Patti	NPS
Shaw, Kim	SCDHS
Shea, Marty	Town of Southampton
Somers, Kimberly	Cashin Associates
Terry, Mark	Town of Southold
Tetrault, Heather	Southold Trustees
Tonjes, David	Cashin Associates
Wasilco, Mike	NYSDEC-Wildlife

Major Plan Accomplishments

- Wertheim OMWM demo
 - First successful comprehensive project of its kind on L.I.
 - Technical and administrative lessons for future restorations
- Primary Study Areas evaluated in detail
- Wertheim-Seatuck Retrospective Study
- Comprehensive literature review
- Plan for 17,000 acres of tidal wetlands
 - First uniform digital tidal wetlands map in Suffolk County
 - 4,000 to revert, 4,000 to be restored, 9,000 to be assessed
 - Remote sensing as cost-effective long-term tool for evaluation
- Criteria for water management
- GIS improvements (map of Suffolk marshes, ditches in PSAs, etc.)



Established three goals:

- 1) reduce mosquito populations
- 2) preserve or increase acreage of wetlands, including vegetated wetlands, and to foster biodiversity and a mosaic of ecological communities
- 3) control *Phragmites* and other invasive plant and animal species



To meet the goals, various objectives were established:

Four mosquito control objectives:

- Examples: no increase in mosquitoes; continue to control disease

Seven biodiversity objectives:

- Examples: mosaic of aquatic habitats; no net loss of wetlands; reduce larvicide by 75%

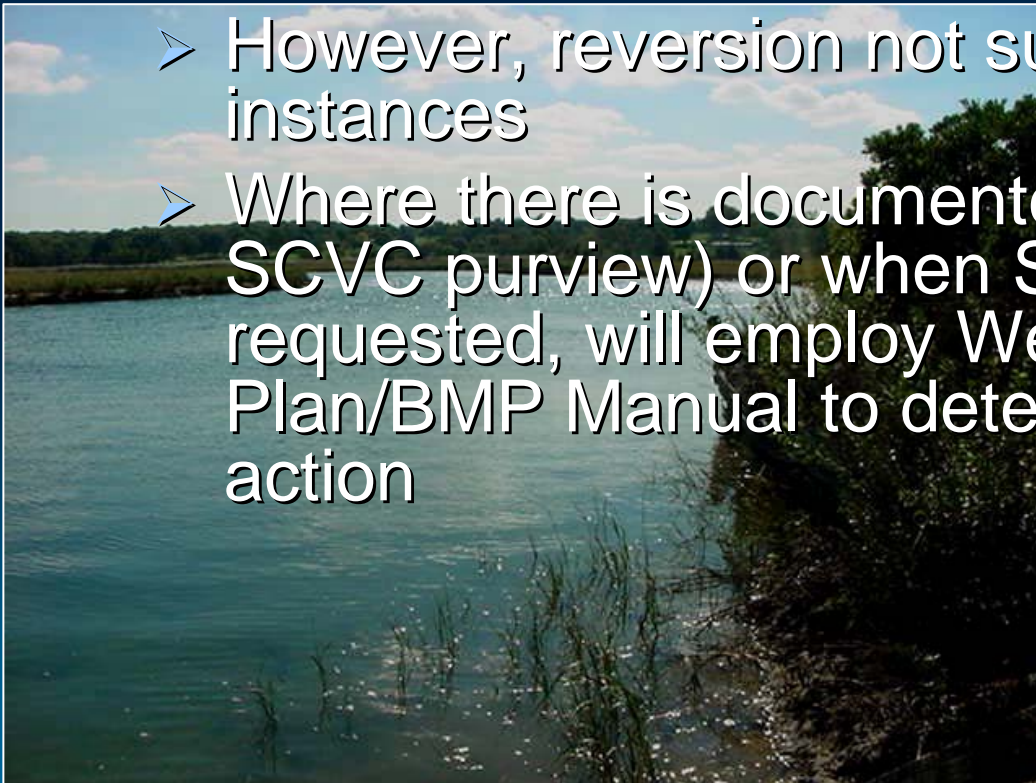
Three *Phragmites* control objectives:

- Example: decrease acreage of *Phragmites*

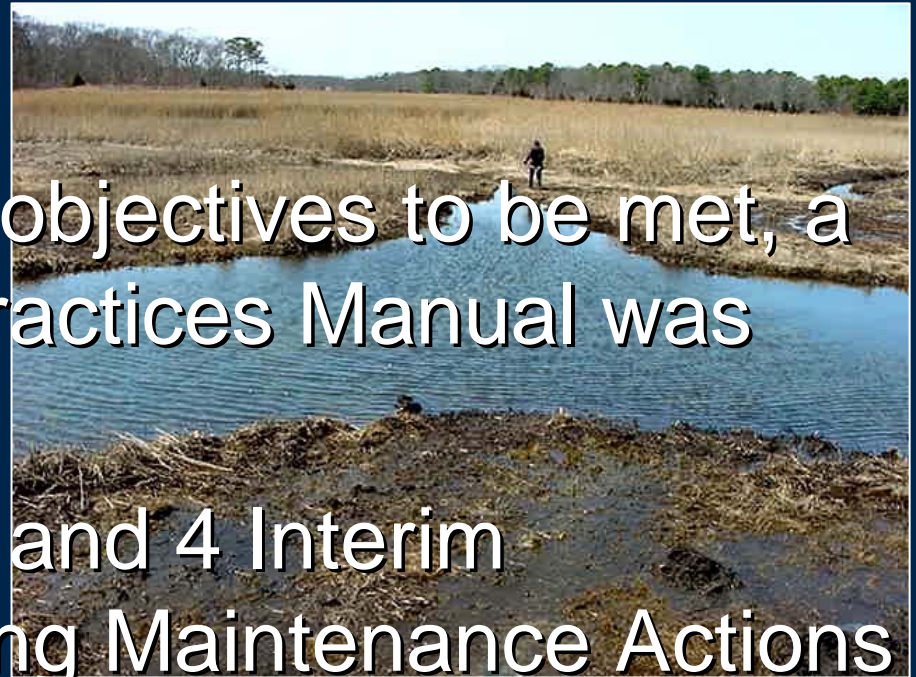


Water Management:

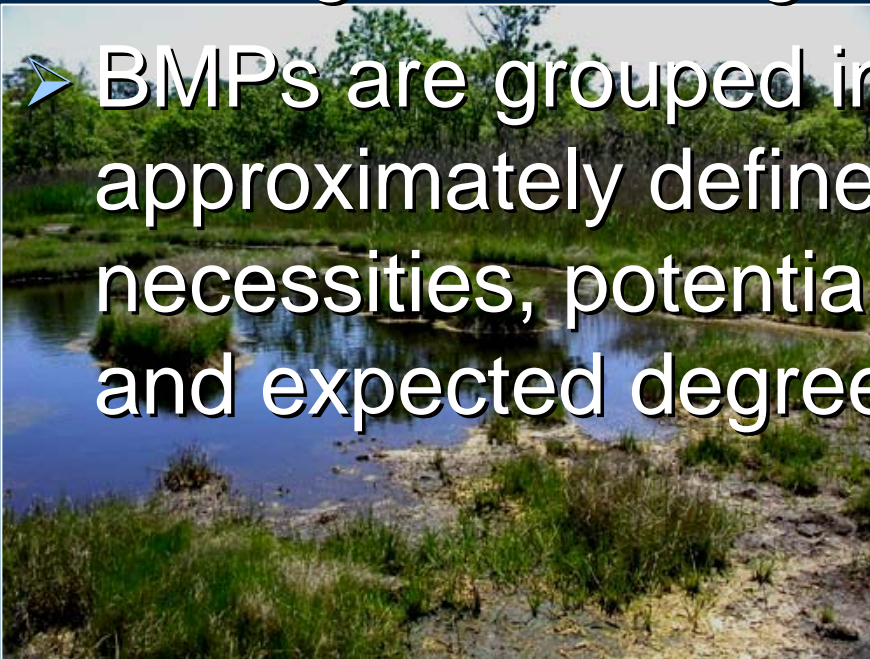
- Major shift from ditch maintenance to more progressive steps
- Default action will be reversion
- However, reversion not suitable in many instances
- Where there is documented problem (within SCVC purview) or when SCVC participation requested, will employ Wetlands Management Plan/BMP Manual to determine appropriate action



- To allow the goals & objectives to be met, a Best Management Practices Manual was created
- It identifies 15 BMPs and 4 Interim Management/On-going Maintenance Actions



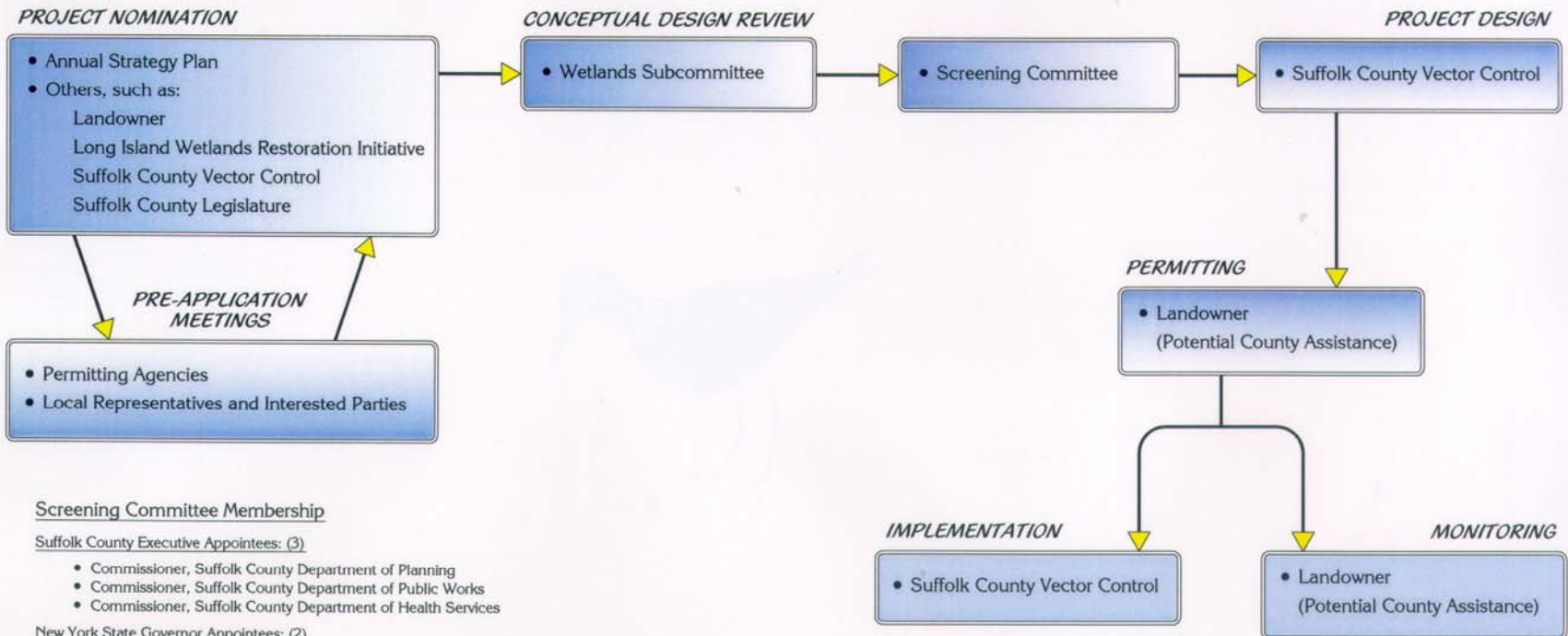
- BMPs are grouped in three subsets that are approximately defined in terms of permit necessities, potential environmental impacts, and expected degree of oversight



BMP Classifications

- 
- Minimal or No Impacts
 - Minor Impacts
 - Major Impacts

SUFFOLK COUNTY WETLANDS SCREENING COMMITTEE FOR INDIVIDUAL MAJOR RESTORATION PROJECTS



Screening Committee Membership

Suffolk County Executive Appointees: (3)

- Commissioner, Suffolk County Department of Planning
- Commissioner, Suffolk County Department of Public Works
- Commissioner, Suffolk County Department of Health Services

New York State Governor Appointees: (2)

- Director, Region I, New York State Department of Environmental Conservation
- Director, Division of Coastal Resources, New York State Department of State

Suffolk County Legislature Appointees: (3)

- Presiding Officer Representative
- Citizen Representative

Towns / Trustees

- Member, based on site location

Long-Term Plan Achievements

- 75% reduction in larvicide applications
- Strategy for 17,000 acres of salt marsh
 - 4,000 acres restoration
 - 4,000 acres reversion
 - 9,000 acres need assessment
- No new ditches
- No reliance on ditch maintenance

