

Update on the
Wertheim OMWM
Demonstration Project

December 2005

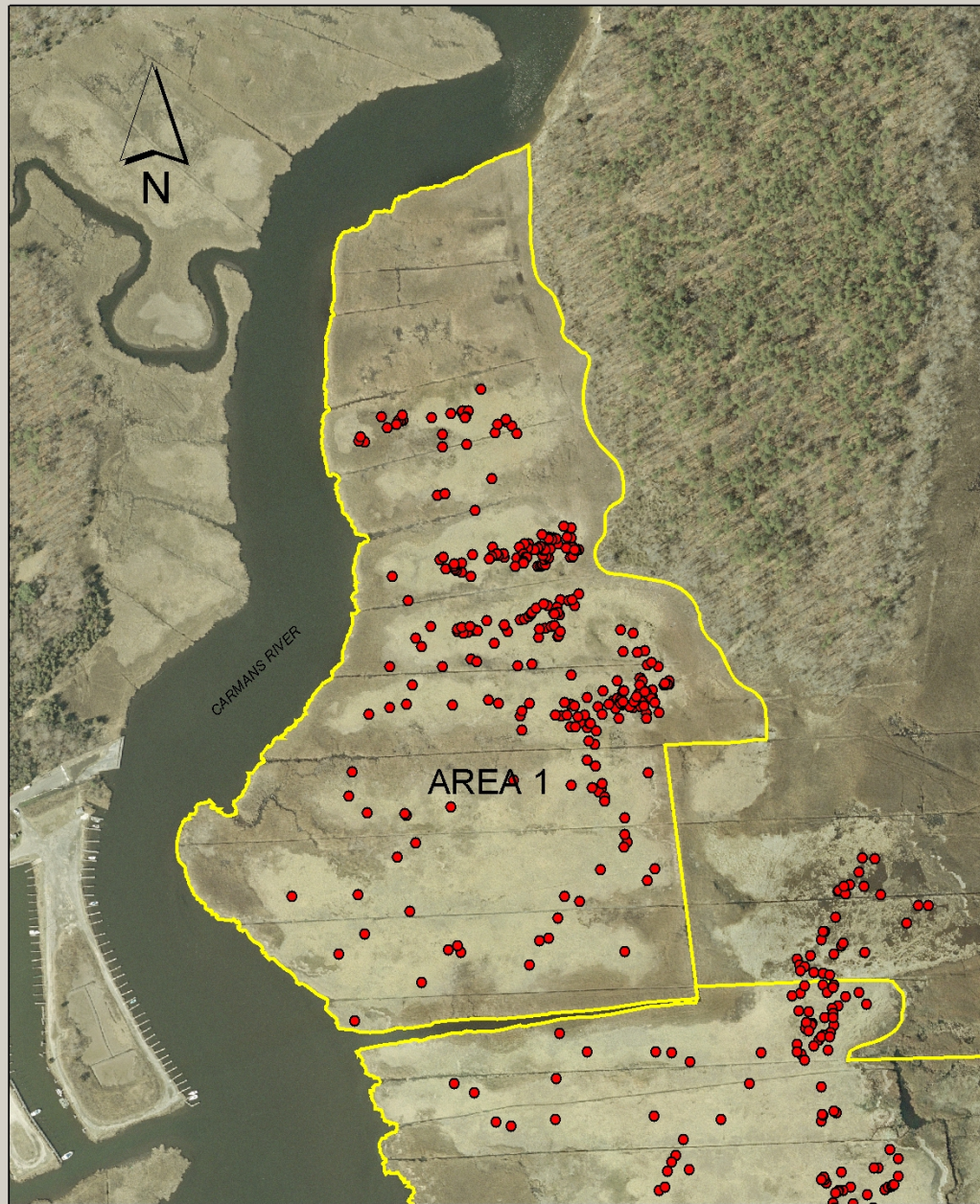
Why a Demonstration Project?

- Proof of concept for OMWM techniques in Suffolk's microtidal environment
- Assess benefits, impacts.
- Develop technical capabilities in design
- Develop permitting capabilities
- Develop construction skills, techniques
- Demonstrate cooperative design with a resource agency for multiple objectives; mosquitoes, migratory birds, other resources

Design, documentation and permits are a big part of the process

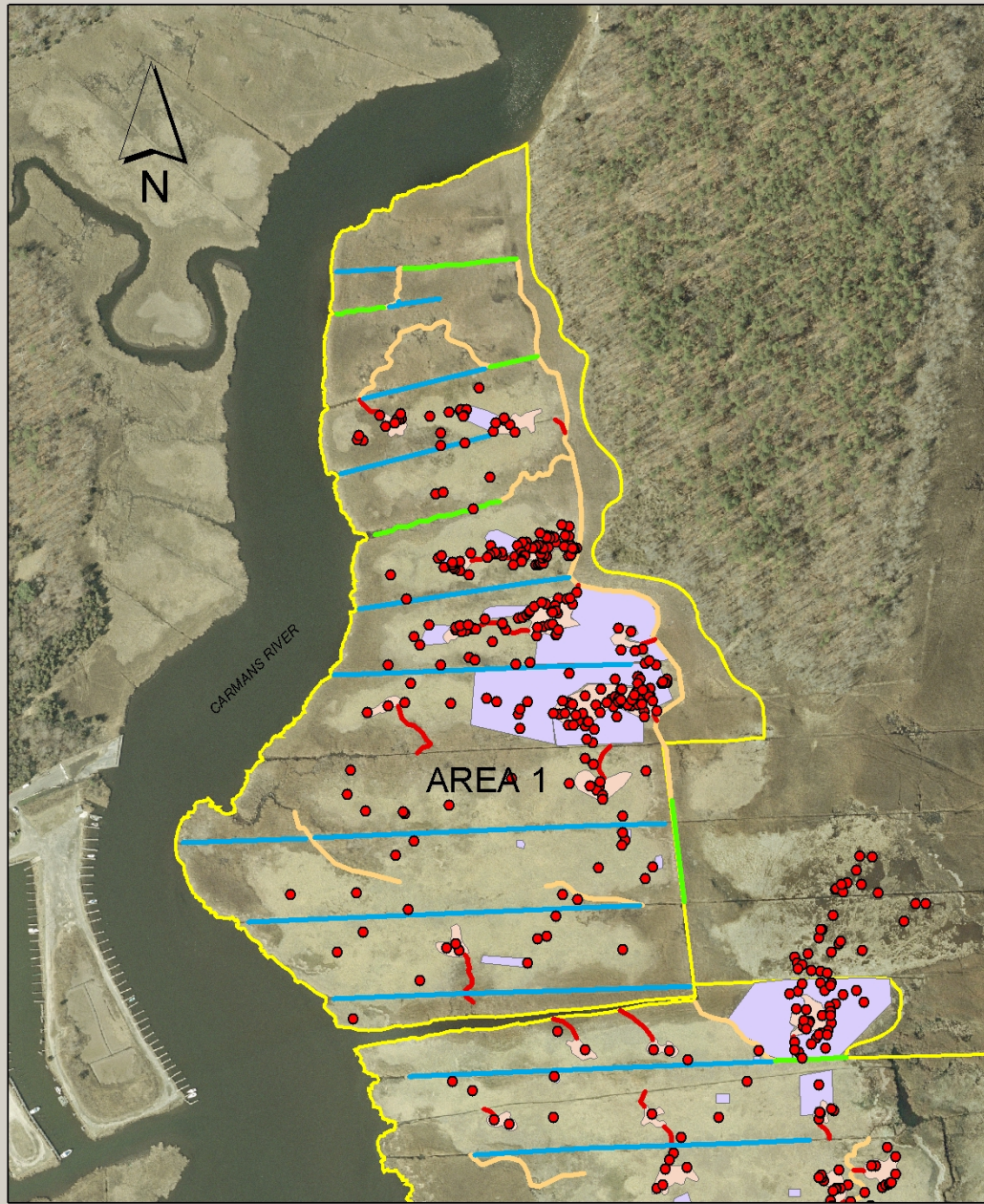
- NYSDEC
- Corps of Engineers
- NYSDOS
- National Marine Fisheries Service





WERTHEIM NWR
AREA 1
PRE-ALTERATIONS
WITH MOSQUITO BREEDING LOCATIONS

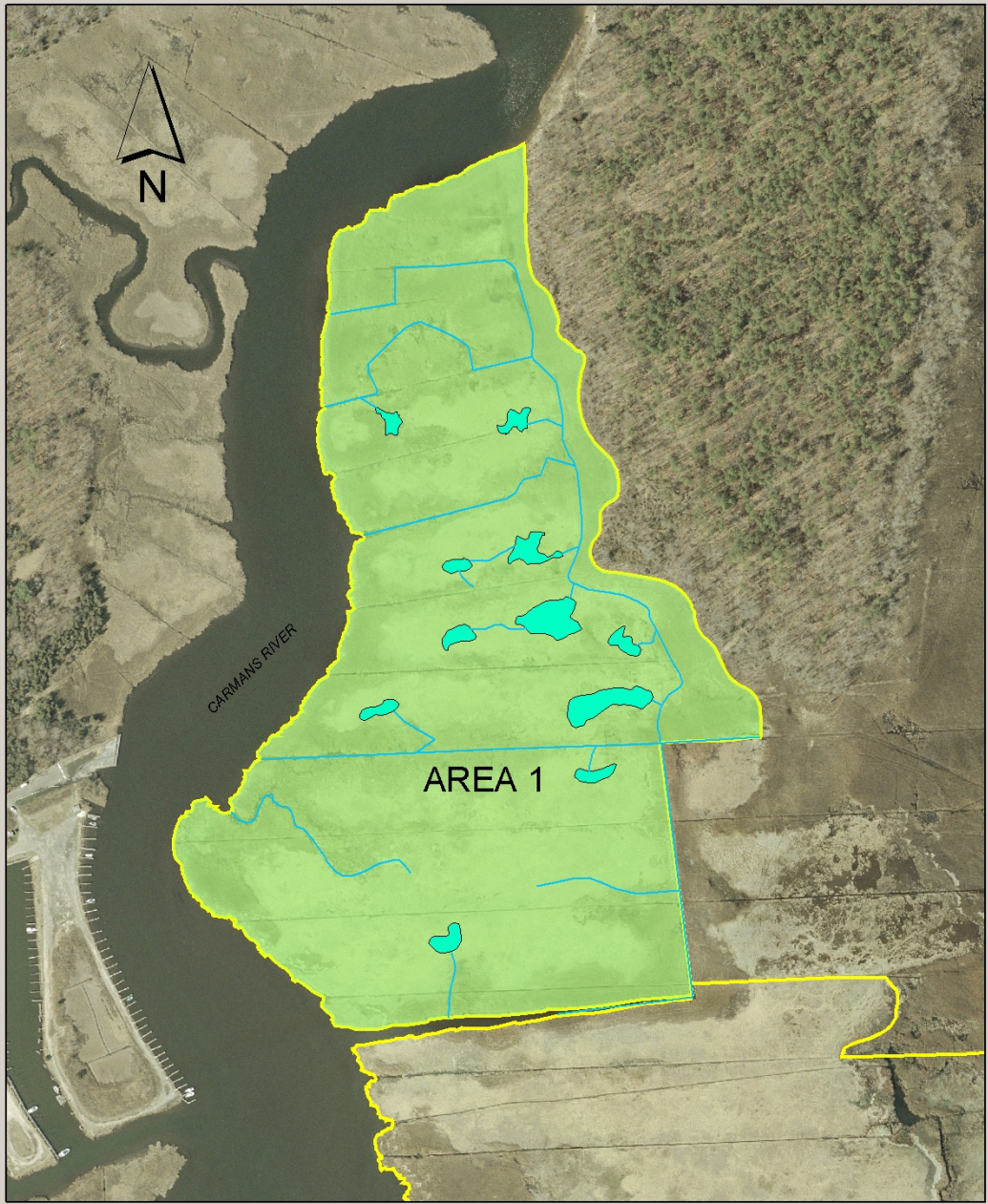
Legend
AREA 1 BOUNDARY
MOSQUITO BREEDING LOCATIONS



WERTHEIM NWR
AREA 1
PROPOSED OMWM

Legend

- MOSQUITO BREEDING LOCATIONS
- CHANNEL CLEANING
- FILL DITCH
- SILL CONNECTOR
- TIDAL CREEK
- BACK BLADE AREA
- POND
- AREA 1 BOUNDARY



**WERTHEIM NWR
AREA 1
POST PROJECT**

Legend

- DITCHES
- POST PROJECT PONDS
- VEGETATED MARSH

Specialized Equipment

Excavators

Dump Carriers

Rotary Excavators

Amphibious ATV

All equipment on marsh
is low ground pressure

5- SCVC, 4 USFWS/DU



Major Features of the Project

- Tidal Creeks
- Ponds
- Filling Select Ditches
- Back-blading and smoothing material

Tidal Creek Construction



Tidal Creeks



- Creek bank grading to naturalize the slope
□ to ▽
- 3140 feet of tidal creeks

Pond Construction - 11 Ponds, 1.5 acres



Shallow Connectors



Pond/Connector System



Filling of Select Ditches



- Material removed from pond construction used to fill select ditches
- Transported by 2 dump bodies
- 5293 Feet of Ditches filled

Ditch Filling



A Filled Ditch



Final Smoothing/Blading











Status Summary

- 40 acres in 17 work days - 8 machines
- Good revegetation
- Good wildlife use
- No treatments needed
- We can do both: control mosquitoes and restore wetlands

